



KINGSWAY
CHRISTIAN COLLEGE

PROSPECTUS



Teach your children to choose the right path, and when they are older, they will remain upon it.

Proverbs 22:6



CONTENTS

| | |
|---------------------------------------|----|
| Welcome to Kingsway Christian College | 2 |
| Our Story and Heritage | 4 |
| Our Mission, Vision, Values | 7 |
| Why Kingsway Christian College? | 9 |
| Faith and Service | 10 |
| Our Community | 12 |
| Pastoral Care | 14 |
| Learning at Kingsway | 16 |
| Early Years | 18 |
| Primary Years | 21 |
| Secondary Years | 22 |
| Co-Curricular Opportunities | 24 |
| Campus and Facilities | 26 |
| How to Enrol | 28 |
| Visit Us | 29 |



WELCOME TO KINGSWAY CHRISTIAN COLLEGE

In the pages to follow you will discover our College's proven reputation for complementing an outstanding Christian educational experience with exceptional academic, co-curricular and vocational opportunities. Our Christ-centred approach to learning is founded on a common purpose – to ensure every child has the opportunity to achieve their full potential.

Our College exists to honour, value and support all children in our care. In our warm and caring community, every student is free to be, encouraged to serve and confident that they belong. Our students learn integrity, to be authentic and to lead lives of purpose as modelled by Christ.

At the heart of our College is a passionate team of talented educators, constantly striving to deliver a programme of educational excellence to support, nurture and enrich the lives of our students. Our very intentional holistic approach to learning, supported by a strong pastoral care network, aims to meet the spiritual, academic, physical, social and emotional needs of every student. We know that the pursuit of excellence flows when students have opportunities relevant to their own God-given interests and talents.

Above all, we aim to empower students to lead purposeful lives through actively contributing to social justice and the common good. A Kingsway education fosters a service mindset and volunteering heart as modelled by Christ.

It is an honour to be a part of this vibrant community which has been welcoming families and inspiring students since 1984. I encourage you to visit our campus and discover more of what makes Kingsway so special. I have no doubt that just like our students, you too will uncover a wonderful world - where learning comes to life.

Peter Burton
College Principal





“

Every student is free to be, encouraged to serve and confident that they belong.

OUR STORY

Kingsway Christian College was founded on the simple premise that parents deserve a school that aligns with their Christian values.

We understand that choosing an education is a fundamental life decision and it should never be compromised. Kingsway provides an unwavering Christian-based education experience while offering a breadth of exceptional academic, co-curricular and vocational training learning opportunities.

A Kingsway education supports students to flourish academically, creatively, socially and spiritually, with the support of a likeminded community. By partnering with Kingsway, families feel at peace knowing that their beliefs are respected and understood.

Our dedicated staff motivate students, challenging them to explore and supporting them to succeed. Our strong pastoral care network nurtures the social and emotional needs of each student, equipping them to lead lives of purpose.

We warmly welcome families from all faiths and backgrounds into our community, while remaining committed to our core values.

The sense of belonging and community at Kingsway is tangible. It truly is a place where learning comes to life.

OUR HERITAGE

In 1983, four families sought an education for their children grounded by strong Christian beliefs and values. They formed a Steering Committee to investigate the establishment of a new school. The following year, on the site of a Baptist church at Craigie, a school for students in Years 1 to 8 was established with six teachers and 110 students.

The College quickly grew in size and reputation. Today, from its location in Darch, Kingsway provides outstanding educational facilities and opportunities for children from Kindergarten to Year 12, continually expanding and adapting to ensure the needs of its students and community are met with the quality Christian education for which Kingsway is renowned.





“ A Kingsway education supports students to flourish academically, creatively, socially and spiritually.





OUR MISSION

To empower and equip students for life through Christ-centred education.

OUR VISION

In our vision, students excel in their education. Students leave our College with a sense of optimism and understanding about the future and how they can serve to the best of their ability while reflecting the values of the College throughout their life. We have created a school that inspires and supports creativity and innovation; where young minds are set free to see the world for all the opportunities that it can offer.

Our caring community recognises that it is stronger when it works together with our families. Together, we actively serve and contribute to make a difference. Together we can bring out the best in people and positively influence the world around us, for the glory of God. In our vision, we are Kingsway Christian College.

OUR VALUES

Transformation

We are committed to personal transformation and becoming more Christ-like in all we do.

Romans 12:2 and Ephesians 4:22-24

Service

We are committed to the service of others as modelled by Christ.

Luke 22:27 and Romans 12:10-11

Collaboration

We are committed to working together in achieving our mission.

Ecclesiastes 4:9 and 1 Corinthians 12:14

Holistic

We are committed to the holistic development of our students, staff and our community.

1 Thessalonians 5:23 and Ephesians 4:15-16

Relationships

We are committed to developing authentic and supportive relationships.

Mark 12:31 and Proverbs 17:17

Integrity

We are committed to knowing and doing what is right and behaving in a way that sets an example for the community around us.

Proverbs 11:3 and Colossians 3:23

“

For I know the plans I have for you,
declares the Lord, plans to prosper you and
not to harm you, plans to give you hope
and a future.

Jeremiah 29:11



WHY KINGSWAY CHRISTIAN COLLEGE?

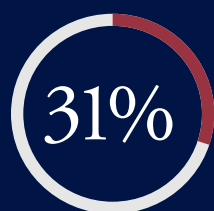
Every student at Kingsway is challenged to explore their world and develop their unique gifts. Discover all the ways we bring learning to life:

Academic Excellence

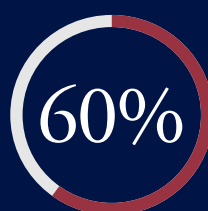
Excellence is a principle woven through the fabric of life at Kingsway.

Careful and ongoing individual assessment helps each student to strive and achieve personal goals of excellence. Our students consistently perform well above State and National averages in all age groups and learning areas. In 2021, two of our graduates scored 99.9% and above.

Kingsway graduates move easily into university education and our highly sought-after vocational programmes provide alternative pathways for future success.



of our students performed in the top 10% of the State*



of our students performed in the top 20% of the State*

Holistic Education

Kingsway's holistic approach to learning nurtures the spiritual, academic, physical, social and emotional needs of every student. Our mission is to enable, empower and equip students for life. In addition to quality academic outcomes from their education, our students learn integrity, to be authentic and to lead lives of purpose as modelled by Christ.

Student Wellbeing

We consider every child's wellbeing fundamental to their growth and we invest in pastoral care to ensure a safe yet stimulating environment where meaningful learning experiences can take place, that celebrate good character over ability. We know that relationships are key to student engagement and outcomes. Our strong support network of carers is complemented by a well-established mentoring programme that enhances a culture of kindness and encouragement among our students.

Diverse Learning Opportunities

Our educational programme is innovative and diverse, reflecting best practice to provide a breadth of opportunities for students to discover. We strive to open new doors for each child by acknowledging and encouraging personal interests, talents and needs. Our co-curricular offering includes Sport, Music, Art, Cadets and a wide range of extracurricular clubs.

Convenience for Families

As a co-educational Kindergarten to Year 12 school, families benefit from all siblings being able to attend the same school for the duration of their education journey, regardless of their gender or academic profile.

Inclusive Community

We proudly welcome families of all faiths and backgrounds into our community. It is a place where families come together in a caring, Christian environment, and play a supportive role in their child's education.

* 2021 ATAR results.



FAITH AND SERVICE

Kingsway Christian College was founded by four families who were seeking a strong Christ-centred education for their children. Our commitment to their vision is unwavering to this day.

In the early years of education, our students develop understanding, values and attitudes which are derived from a biblical Christian perspective. As they grow, students are encouraged and supported to be responsible stewards of their abilities, demonstrating Christian values of self-discipline, perseverance, accountability and personal excellence.

In partnership with families and the Christian community, we aim for every child to gain an understanding of themselves, their purpose and their potential in God.



Service

Throughout the Kingsway learning journey, students are encouraged to build independence, self-confidence, resourcefulness and responsibility. Each student models Christian values with integrity and purpose. Focusing on the growth of the whole person, we encourage our students to become involved in service and mission opportunities through churches both within Australia and globally.

Our Christian Beliefs

One God eternally existent in three Persons: Father, Son and Holy Spirit.

The sovereignty of God in creation, providence, redemption, revelation and final judgement.

The Divine inspiration of the original documents of the Bible; its entire trustworthiness, sufficiency and supreme authority in all matters of faith and conduct.

The Deity of our Lord Jesus Christ, His virgin birth, His sinless life, His miracles, His atoning death on the cross as our representative and substitute, His bodily resurrection, His ascension to the right hand of the Father, His mediatorial work and in His personal, visible return in power and glory.

The sinfulness and guilt of all mankind, rendering them subject to God's wrath and condemnation.

Justification of the sinner by the grace of God through personal faith in Christ alone, and regeneration by the Holy Spirit.

The receiving and indwelling of the Holy Spirit at conversion, and His continuing work in the heart and life of the believer.

The one holy universal Church, the body of which Christ is the Head, to which all true believers belong.

The resurrection and judgement of all mankind: the believer to life everlasting and the unbeliever to eternal separation from God.

OUR COMMUNITY

Our College community completes the circle of care between home, school and church. Every student and their family is warmly welcomed into a supportive and safe Christian environment based on shared beliefs and values.

“Classroom discussions were often based on biblical principles and I always felt safe at our school.”
Michelle Casinader, 2015 Graduate

Alumni

Testament to the strength of our community are the connections maintained with past students, staff and their families. Friendships and bonds forged at Kingsway, extend beyond into life. We have a proud and involved alumni demonstrating the College’s commitment to the growth and maturity of our students in Christ and society.

“What got me through that time was the faith in God that was developed and nurtured at Kingsway.” Matthew Scott, 1993 Graduate – on his experience during dangerous overseas missions with the Australian Army.

Teachers

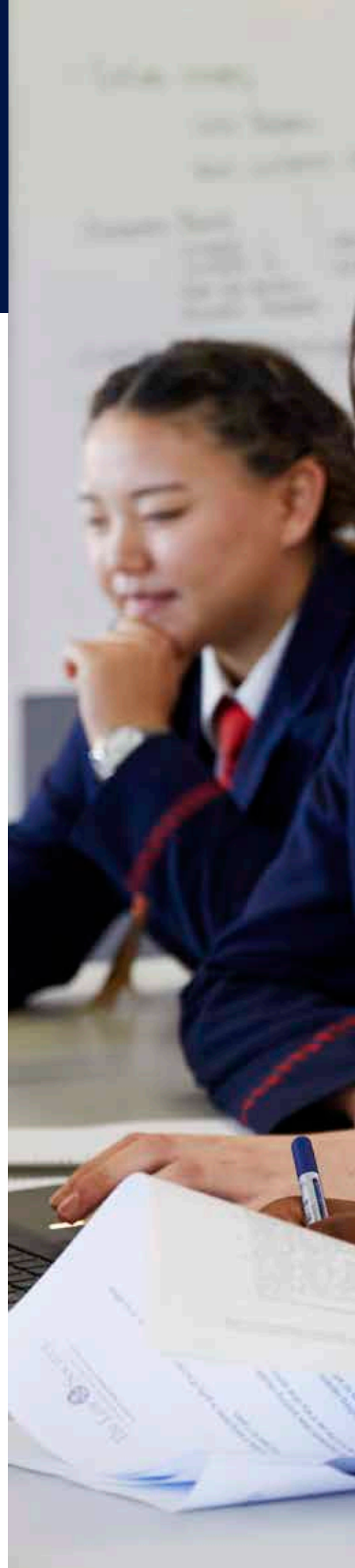
Our teachers view their vocation as both a ministry and a career. We are committed to selecting educators who engage your child in a learning journey that is exciting, authentic and relevant to their own interests. Our dedicated team motivate students to discover and excel, supporting them to succeed on their chosen pathway. We enjoy a strong reputation for high levels of care and expertise. Constantly striving for personal excellence and modelling Christian attitudes and values, our teachers seek out opportunities for professional development to ensure an outstanding education for our students.

“This is the place that can help you to flourish in your studies, flourish academically – in sports, in arts and in whatever area you’re planning to develop in.” Joshua Then, 2021 Graduate

Parents

Family forms a vital and active role in partnering with the College to provide a holistic and meaningful education for every child. Parents have many opportunities to become involved with our caring community. Our Parents and Friends Group seeks to create a safe and belonging space to bring families together in fellowship and collaboration.

“Critical to our mission is our partnership with families and the Christian community.”





PASTORAL CARE

It is imperative that our students feel safe, valued and free to be themselves. Pastoral care at Kingsway Christian College is an integral part of the learning journey. With Christian faith at our core, we help our students understand their responsibility to care for each other and to make active contributions towards social justice throughout their lives.

Teachers, Chaplains, Heads of Students and support staff all play a vital role in maintaining our vibrant and supportive community and sense of belonging.

Mentoring

Kingsway has a strong culture of mentorship, with older students looking out for younger students. Primary students participate in a Buddy programme and Year 10 students mentor Year 7 students as they transition into Secondary School.

Transformation

One of our core values is transformation. Understanding that education is an investment in your child's future, we provide a holistic education that focuses on the growth and development of the whole person to prepare students for life. A Kingsway education opens doors for children to gain an understanding of themselves, their purpose in life and their potential in relation to God.

Our students value:

- Christian foundations in life
- Courage, resilience and confidence
- Community spirit which celebrates diversity
- Striving to make the most of God-given gifts and talents
- Respect for self, others and the environment

Wellbeing

The College delivers a Protective Behaviours Curriculum to all students from Kindergarten to Year 12. This creates a safe environment where children learn about social and emotional wellbeing. The curriculum helps children to identify feelings, act responsibly, and navigate bullying issues to ensure all students can feel safe at all times.

Behavioural Standards

The College's discipline policy is biblically based, prayerfully prepared and lovingly exercised to benefit every child.

Students are encouraged to learn from their mistakes, make appropriate restoration and persevere in Christian behaviour. Our approach to discipline creates a positive learning environment and leads to productive relationships.

Prayer and counselling are offered to students, with many opportunities available through prayer meetings, devotions and friendship programmes.





“

We strive to uphold the equal value of every child under Christ, regardless of their ability.



LEARNING AT KINGSWAY

Excellence is the hallmark of a Kingsway Christian College education. Our students excel because they are motivated to discover, challenged to explore and supported to succeed. A place where learning comes to life.

Above all else, we endeavour to empower and equip students to lead lives of purpose. We do this by providing a Christ-centred holistic education from Kindergarten to Year 12, working closely with every child to determine personalised learning so they can set, pursue, and achieve individual goals along their chosen pathway.

Curriculum

Focusing on the eight learning areas of English, Health and Physical Education, Languages, Mathematics, Science, Humanities and Social Sciences, Technology and Enterprise and the Arts, the breadth of our curriculum gives students an opportunity to be who they were created to be and to achieve a meaningful understanding of the wisdom of Christ.



Enrichment

As an inclusive College, we nurture and support students with disabilities including physical and intellectual impairment. Our learning programmes ensure every student has access to extra tuition and class activities to help them discover their unique talents.

Extension

We foster an attitude of responsible stewardship of each students' God-given gifts and abilities and empower them to exercise their talents responsibly. Every endeavour is made to extend our gifted and talented students. A broad range of extension and enrichment experiences are provided to meet the needs of our students from Kindergarten to Year 12.

Scholarships

The College offers academic and sport scholarships for students entering Years 7 to 12. Financial scholarships are also available for students whose financial circumstances might otherwise prevent them from attending the College.

More information on our scholarships can be found [here](#).

Pathways

Students can choose from a wide array of tertiary and vocational entry opportunities. The College has a dedicated Careers Hub to assist with career counselling and planning as well as future study goals.

Our graduates are accepted into a broad range of tertiary and vocational courses, including Medicine, Law, Engineering, Arts, Social Work and Teaching. A number of our students have been awarded university scholarships and high accolades. In addition to our outstanding ATAR results, the College offers a strong Vocational Education Programme (VET) that is nationally recognised. Our graduates compete strongly for apprenticeships, TAFE courses and employment in the fields of Hospitality, Media, Design and Technology, Business and more.

EARLY YEARS

At Kingsway Christian College, we understand the need to nurture our youngest learners' natural curiosity as they embark on their journey into the world of learning.

Our robust early childhood programmes enhance children's cognitive, physical, social and motor skills. Students in Kindergarten to Year 2 are challenged to explore in a vibrant and energetic environment – a place where learning comes to life.

Early Learning at Kingsway provides a solid foundation to equip and empower our students for life. There is a strong focus on developing literacy and numeracy, as well as emotional and spiritual development to foster positive behaviours and friendships.

Our Learning Spaces

Our dynamic learning spaces support students to discover their God-given talents, ensuring each child feels part of our warm and caring community, where they are free to be and confident that they belong. Authentic play-based and hands-on learning experiences are provided, enabling a balance of child initiated, teacher guided and explicit teaching.

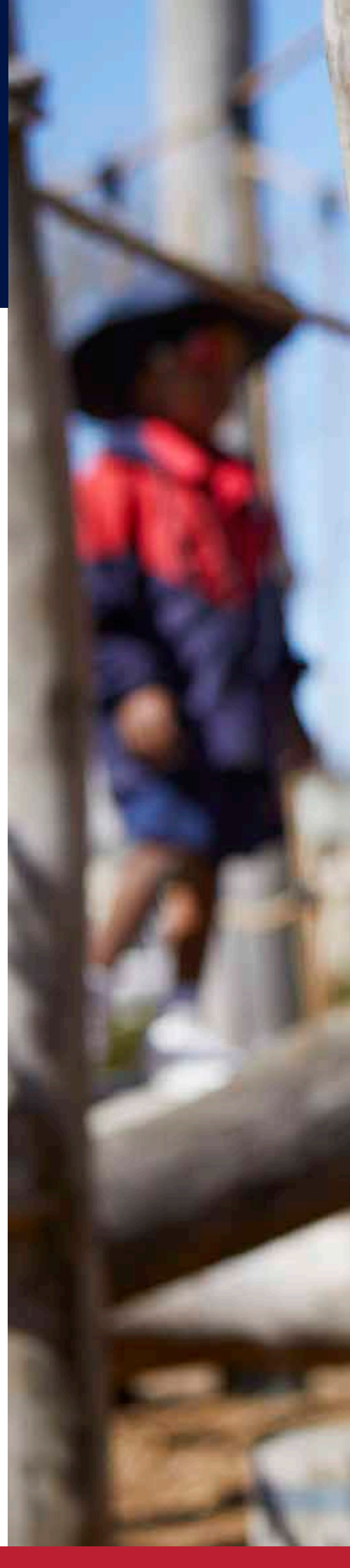
Kingsway students begin their learning journey supported and empowered to excel through programmes involving Art, Music, Sport, Science, Mathematics, Language, Technology and free expression through play. Early Learning students also have an abundance of opportunity to connect with the natural environment and to appreciate and care for the world around them,

Our Teachers

Our teachers are devoted to motivating our inquisitive and creative young explorers. With the knowledge that each child has individual strengths and capabilities, our teachers structure developmentally appropriate programmes under the guidance of the Western Australian Curriculum and the Early Years Learning Framework. Our teachers build on each student's knowledge and experience to take them further on their learning journey and nurture their transition to the upper Primary Years.

Our Parents

We encourage and welcome all parents to explore our Early Learning experience with their children, and to be actively involved in their learning.









PRIMARY YEARS

The Primary Years of schooling from Years 3 to 6 are critical to each student's learning progression and confidence. Building upon the strong foundation set by our passionate and devoted teachers, our Primary students continue to flourish in a caring environment that caters to their distinct learning styles.

During these formative years, we challenge students to pursue personal excellence by setting achievable goals in the context of a safe, Christian environment. Through an integrated inquiry approach, our students formulate questions and share their ideas. This fosters curiosity and helps the development of critical and creative thinking – essential skills to support students to succeed on their chosen pathway.

In addition to the learning areas of literacy, numeracy, science and humanities, students can also begin to explore their personal interests and God-given talents through a broad range of co-curricular programmes in Art, Drama, Music, Sport, Technology and Language. Classroom teachers work closely with Specialist teachers to form a committed team and supportive network across all areas including Educational Support and Enrichment.

Our Christian faith lives at the core of everything we do, enabling students to apply a meaningful understanding of Christ throughout their journey, into secondary education and the world beyond.

Our partnership with parents plays an important role throughout Primary School. Recognising our community is stronger when we work together, we warmly welcome our parents' help in the classroom, on excursions and sports days. Parents are always encouraged to communicate with class teachers to enhance our circle of care between the home and school.

SECONDARY YEARS

Lower Secondary

At Kingsway Christian College we recognise that during the Lower Secondary years of learning, students in Years 7 to 9 are forming a connection to their future and need strong engagement in learning programmes that are structured and stimulating to support them on their chosen pathway.

While the curriculum is different for each year group, the College actively encourages all years to communicate and form respectful friendships with one another. The curriculum and in particular, the classroom locations, enable our Lower and Upper Secondary students to interact and share the learning journey.

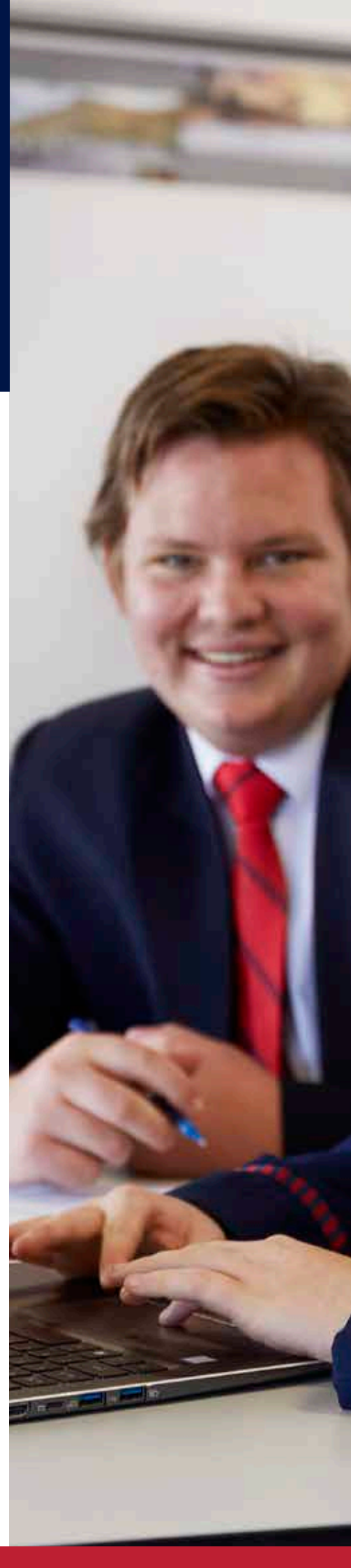
Students engage in English, Mathematics, Science and Humanities and Social Sciences (HASS) for six periods per week in each area. Complementing this programme is a Christian Education Course which flows through to Upper Secondary years. An opportunity to engage in Arts, Technology and Enterprise, Health and Physical Education and Languages is also an essential part of our Lower Secondary programme.

Upper Secondary

Our Upper Secondary students in Years 10 to 12 are encouraged to pursue excellence on their chosen pathway, expanding their extensive opportunities in English, Health and Physical Education, Languages, Mathematics, Science, the Arts, Technology and Humanities and Social Sciences.

In Year 10, students will have the opportunity to choose Vocational Training courses which facilitate TAFE entry, while others choose courses leading to university entrance for their final two years of study.

Our College staff are committed to motivating students to persevere and excel in these challenging final years and our Careers Hub is available to all students to assist them with career counselling.





Vocational Education and Training (VET)

Kingsway's VET programmes give students exceptional opportunities to gain core skills for work and, in some cases, to complete industry training through workplace learning. Students taking part in VET qualifications can begin training for their career while still at the College.

The following qualifications are offered on campus:

- A school-based traineeship while completing Certificate II in Kitchen Operations.
- Certificate III in Work Skills.
- Certificate IV in Business.

Other courses may require the student to attend TAFE once a week and complete a specified number of hours in a work placement. Students can choose from a wide range of industry areas including Hospitality, Electrical and other trades, Child Care, Sport and Recreation, Health and Community Services.

Technology

Technology is used in the classroom to enhance learning experiences and to make education relevant and engaging. Students in Years 5 to 12 participate in the College's One-to-One programme, where a specified device can be used to complement their learning.

CO-CURRICULAR OPPORTUNITIES

Kingsway Christian College provides a breadth of exceptional co-curricular opportunities. We know that active participation in co-curricular activities leads to improved confidence, strengthened relationships and enhanced academic success.

The Arts

Students at Kingsway express their imaginative, creative and critical thinking abilities across Dance, Drama, Media, Music and Visual Art.

Music flows through the soul of Kingsway, connecting our Christian community through sound and spirit. Specialist Music teachers provide many opportunities for students to enhance their music training, including instrumental tuition. Primary students can learn strings, guitar and piano while Secondary students can choose from woodwind, brass, vocals or percussion.

Kingsway's journey of Drama evolves through play building, improvisation, text interpretation, play-writing and composition. Students build skills in acting, production, design, directing, scenography, costumes, props, sound and lighting and promotion.

Opportunities exist for our students to participate in our annual College Art Exhibition, drama productions, theatrical performances, musical recitals and film viewings in our state-of-the-art College Auditorium.

Physical Education

Our exceptional sporting programme motivates students to discover and excel with the support of teammates and our committed staff. All students are encouraged to be active and enjoy the sporting opportunities offered. Physical activity aids positive mental health and body confidence, while social integration fosters values of respect and comradery.

Students benefit from our indoor multi-purpose sports centre, weights and fitness gym, two outdoor multi-sport bitumen courts and an oval with 400m athletics track. Our location next to the Kingsway International Sports Complex also allows for additional sporting lessons.

Kingsway participates in a number of sporting competitions, including inter-house and ACC Carnivals.

Specialist Basketball Programme

Our Specialist Basketball programme is available to our Secondary students and caters for all levels from beginner to elite. The programme provides tailored coaching sessions and classes each week, as well as morning sessions where members hone their skills and compete.





Cadets

The Emergency Services Cadet Corps offers students challenging, diverse and rewarding activities. Participants gain valuable life skills including teamwork and leadership qualities. This programme also promotes responsibility and belonging, encouraging students to serve as active citizens in our community.

Clubs

Kingsway runs a range of after-school clubs which provide students the opportunity to share their learning and explore their unique talents and passions in many areas outside the classroom.

Camps and Excursions

Camps and excursions challenge students to bring learning to life through personal growth, adaption and teamwork. Camp opportunities for Primary students occur in Years 5 and 6 and Years 7, 9 and 11 in Secondary. Our camps are held within Western Australia, with students visiting Busselton, Albany and Ningaloo.



CAMPUS AND FACILITIES

A range of progressive facilities brings learning to life for students, enhancing their educational journey and creating optimal learning environments for focused learning. Students enjoy dynamic and contemporary classrooms equipped with appropriate technology, air quality and natural lighting.

Our pristine College grounds and bright gardens are preserved with much pride at the College. When students are not in class, many can be found enjoying our outdoor play areas or the lush green grass that makes up the majority of the College panorama. Our sporting facilities include indoor and outdoor courts and a large oval.

Our state of the art 900 seat College Auditorium is home to weekly assemblies as well as many



prestigious events at Kingsway. Other significant facilities include, College Gymnasium, Science Block with six laboratories, Media classroom with an exciting Green Room, our Café and various Home Economics facilities where students immerse themselves in a range of hospitality and cooking ventures.

Future Developments

At Kingsway we are always looking to the future, motivated to equip students with an educational journey that enables them to step into the world with purpose, as modelled by Christ.

A new masterplan development is currently under construction at the College. Upon completion in late 2023, the building will provide a focal learning and resource hub for the College, connecting our Primary and Secondary schools with a facility that meets the evolving learning needs of our students.

The contemporary learning environment features purpose-built Design Technology, Arts and Media facilities, along with collaborative and flexible learning spaces and resources to facilitate a range of educational and co-curricular activities for students, staff and the broader school community.

Progress updates and further information can be found on our [website](#).

HOW TO ENROL

We proudly welcome families from all faiths and backgrounds into our community, while remaining committed to our core values. We invite families to have a conversation with us about their children's educational needs, so that together, we can decide whether Kingsway Christian College is the right school to partner with.

Step 1: Submit an Enrolment Enquiry

Complete our online Application for Enrolment form [here](#).

APPLICATION CHECKLIST

- Copy of birth certificate
- Copy of two most recent school reports
- Copy of most recent NAPLAN results (if applicable)
- Church reference (if applicable)
- Copy of court orders and/or parenting plans (if applicable)
- AIR immunisation records
- Visas (if applicable)
- Signed Fees and Terms and Conditions forms

Step 2: Enrolment Interview

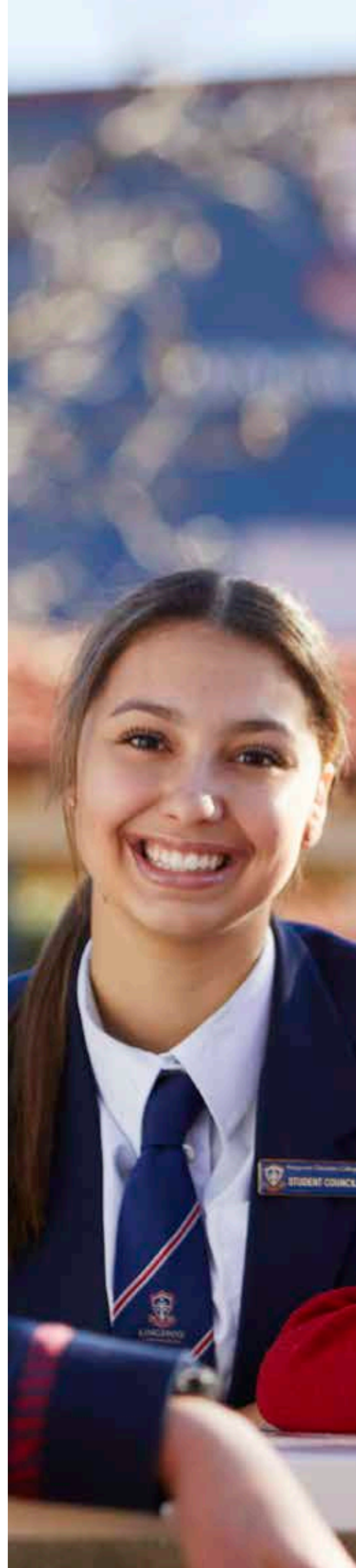
Your family will be invited to attend an interview with the Principal once your application has been processed and there is a place available. Interviews generally occur one to two years prior to commencement.

Step 3: Offer of Enrolment

If Kingsway offers your child a place at the College, you will need to pay a non refundable Enrolment Confirmation Fee of \$400 per student to confirm the place(s) within 7 days.

Application Support

If you require assistance with your application, please contact our Enrolments team at enrolments@kcc.wa.edu.au or (08) 9302 8777.





VISIT US

Campus Tours

We invite all interested families to attend a tour of our modern campus, meet our dedicated team, and discover what makes Kingsway Christian College a place where learning comes to life.

Reserve a place on an upcoming tour [here](#) or contact us using the details below.

Contact Us

157 Kingsway
Darch WA 6065
(08) 9302 8777
kingsway@kcc.wa.edu.au



KINGSWAY

CHRISTIAN COLLEGE

157 Kingsway, Darch

Western Australia, 6065

T: (+61 8) 9302 8777

F: (+61 8) 9409 6179

Kingsway@kcc.wa.edu.au

www.kingsway.wa.edu.au

CRICOS Provider No: 01855M